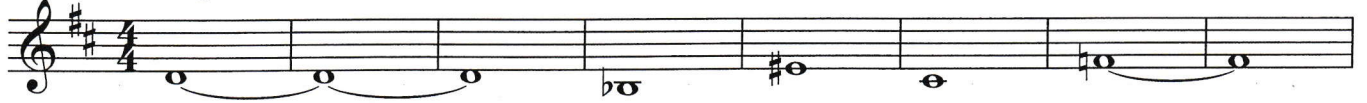


# TONALITY SHIFTING WARM-UPS

E $\flat$  CONTRALTO CLARINET F series

Chris Sharp (ASCAP)

## 1. Long Tones ♩ = 84



## 2. Flexibility ♩ = 72



## 3. Chorale ♩ = 132



### B $\flat$ series

#### 1. Long Tones $\text{♩} = 84$

Two staves of musical notation for the 'Long Tones' exercise. The first staff shows a sequence of notes: G4 (half note), A4 (half note), B4 (half note), B $\flat$ 4 (half note), B $\flat$ 4 (half note), B4 (half note), B $\sharp$ 4 (half note), and B4 (half note). The second staff shows a sequence of notes: G4 (half note), A4 (half note), B4 (half note), B $\sharp$ 4 (half note), B4 (half note), B $\flat$ 4 (half note), B4 (half note), and B $\flat$ 4 (half note). Both staves have a treble clef and a key signature of one sharp (F#).

#### 2. Flexibility $\text{♩} = 72$

Seven staves of musical notation for the 'Flexibility' exercise. Each staff begins with a treble clef and a key signature of one sharp (F#). The notation consists of eighth-note runs with various accidentals and phrasing slurs. The first staff starts with G4 and ends with B4. The second staff starts with B $\flat$ 4 and ends with B4. The third staff starts with B $\sharp$ 4 and ends with B4. The fourth staff starts with B4 and ends with B $\flat$ 4. The fifth staff starts with B $\sharp$ 4 and ends with B4. The sixth staff starts with B4 and ends with B $\flat$ 4. The seventh staff starts with B4 and ends with B $\flat$ 4.

#### 3. Chorale $\text{♩} = 132$

One staff of musical notation for the 'Chorale' exercise. It starts with a treble clef and a key signature of one sharp (F#). The notes are: G4 (quarter note), A4 (quarter note), B4 (quarter note), B $\flat$ 4 (quarter note), B4 (quarter note), B $\flat$ 4 (quarter note), B4 (quarter note), and B $\flat$ 4 (quarter note). The staff ends with a double bar line.