

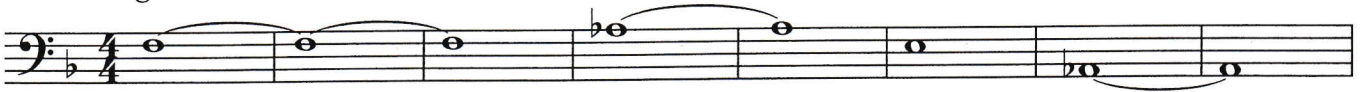
TONALITY SHIFTING WARM-UPS

F series

TROMBONE 3

Chris Sharp (ASCAP)

1. Long Tones ♩ = 84

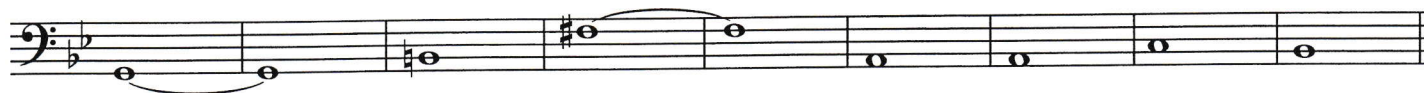


2. Flexibility ♩ = 72



3. Chorale ♩ = 132



B \flat series1. Long Tones $\text{♩} = 84$ 2. Flexibility $\text{♩} = 72$ 3. Chorale $\text{♩} = 132$ 