

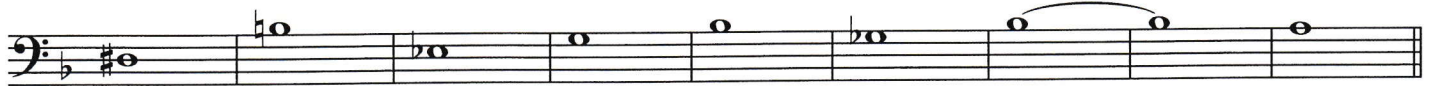
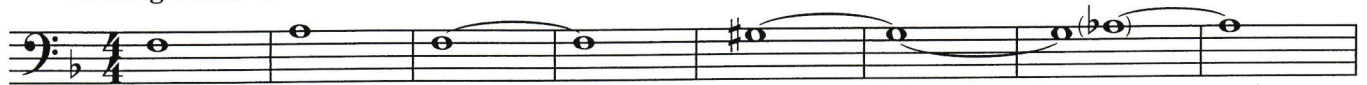
TONALITY SHIFTING WARM-UPS

TROMBONE 2

F series

Chris Sharp (ASCAP)

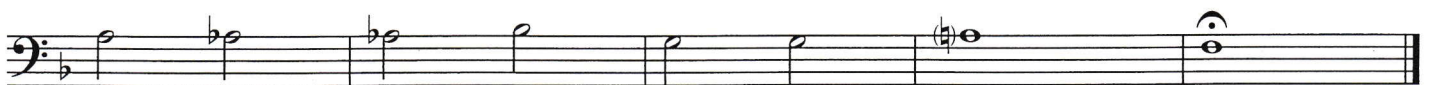
1. Long Tones ♩ = 84



2. Flexibility ♩ = 72



3. Chorale ♩ = 132



B \flat series

1. Long Tones $\text{♩} = 84$

Two staves of musical notation for the Long Tones exercise. The first staff contains four measures of whole notes: B \flat 1, B \flat 2, B \flat 3, and B \flat 4. The second staff contains four measures of whole notes: B \flat 5, B \flat 6, B \flat 7, and B \flat 8. The key signature is one flat (B \flat).

2. Flexibility $\text{♩} = 72$

Six staves of musical notation for the Flexibility exercise. Each staff begins with a fingering number (6, 5, 4, 3, 2, 1) above the first note. The notes are eighth notes with slurs, moving in a chromatic scale across the six staves. The key signature is one flat (B \flat).

3. Chorale $\text{♩} = 132$

One staff of musical notation for the Chorale exercise. It consists of seven measures of half notes: B \flat 1, B \flat 2, B \flat 3, B \flat 4, B \flat 5, B \flat 6, and B \flat 7. The key signature is one flat (B \flat).