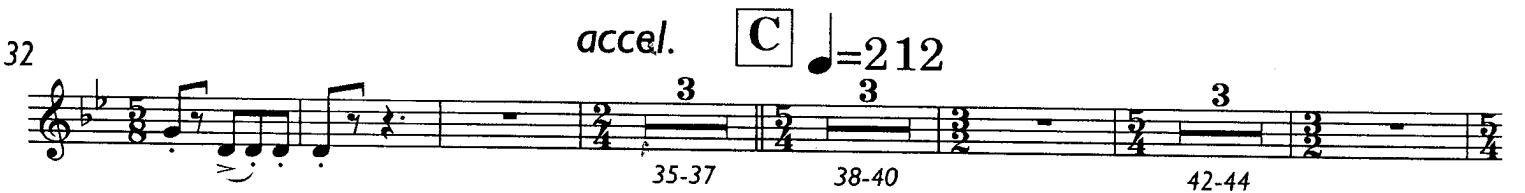
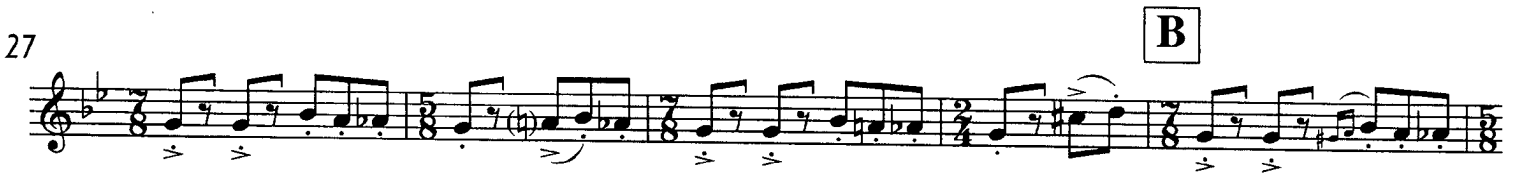


Oboe 2

Night on Fire from "The Soul Has Many Motions"

John Mackey

$\text{♩} = 180$



Oboe 2 : 2

D

Musical notation for section D, measures 46-52. The music is in a key signature of two flats and features a 3/4 time signature. It consists of two measures of a triplet of eighth notes, followed by a measure of a triplet of eighth notes with a fermata, and another measure of a triplet of eighth notes. The dynamic marking is *f*.

54

Musical notation for section D, measures 54-57. The music is in a key signature of two flats and features a 3/4 time signature. It consists of four measures of eighth notes with accents, followed by a measure of a triplet of eighth notes with a fermata.

E

Musical notation for section E, measures 58-64. The music is in a key signature of two flats and features a 3/4 time signature. It consists of two measures of a triplet of eighth notes, followed by a measure of a triplet of eighth notes with a fermata, and another measure of a triplet of eighth notes. The dynamic marking is *f*.

67

Musical notation for section E, measures 67-71. The music is in a key signature of two flats and features a 3/4 time signature. It consists of four measures of eighth notes with accents, followed by a measure of a triplet of eighth notes with a fermata.

72

Musical notation for section E, measures 72-74. The music is in a key signature of two flats and features a 3/4 time signature. It consists of three measures of eighth notes with accents, followed by a measure of a triplet of eighth notes with a fermata. The dynamic marking is *f*.

75

Musical notation for section E, measures 75-77. The music is in a key signature of two flats and features a 3/4 time signature. It consists of three measures of eighth notes with accents, followed by a measure of a triplet of eighth notes with a fermata.

F

Musical notation for section F, measures 78-80. The music is in a key signature of two flats and features a 3/4 time signature. It consists of two measures of a triplet of eighth notes, followed by a measure of a triplet of eighth notes with a fermata.

G

Musical notation for section G, measures 86-88. The music is in a key signature of two flats and features a 3/4 time signature. It consists of two measures of a triplet of eighth notes, followed by a measure of a triplet of eighth notes with a fermata. The dynamic marking is *ff*.

H

95

Musical notation for section H, measures 95-98. The music is in a key signature of two flats and features a 3/4 time signature. It consists of four measures of eighth notes with accents, followed by a measure of a triplet of eighth notes with a fermata.

I

100

103-104

2

Detailed description: This staff contains measures 100 through 104. It begins with a treble clef and a key signature of two flats. The time signature changes from 7/8 to 5/8, then to 3/4, and finally to 3/2. The music features eighth and sixteenth notes with accents. A fermata is placed over the final measure (104), with the number '2' written above it. The measure numbers '103-104' are printed below the staff.

105

106-108

3

f

Detailed description: This staff contains measures 105 through 108. It continues with the same key signature. The time signature changes from 3/2 to 5/4, then to 3/2, and finally to 5/4. The music features eighth and sixteenth notes with accents. A fermata is placed over the final measure (108), with the number '3' written above it. The dynamic marking '*f*' (forte) is present. The measure numbers '106-108' are printed below the staff.

111

Detailed description: This staff contains measures 111 through 114. The time signature changes from 5/4 to 3/2, then to 5/4, and finally to 3/4. The music features eighth and sixteenth notes with accents.

115

poco a poco cresc.

Detailed description: This staff contains measures 115 through 117. The time signature changes from 3/4 to 3/2, then to 3/2, and finally to 5/4. The music features eighth and sixteenth notes with accents. The dynamic marking '*poco a poco cresc.*' (poco a poco crescendo) is written below the staff.

J

118

Detailed description: This staff contains measures 118 through 120. The time signature is 5/4. The music features eighth and sixteenth notes with accents.

121

Detailed description: This staff contains measures 121 through 123. The time signature changes from 5/4 to 3/2, then to 5/4, and finally to 3/2. The music features eighth and sixteenth notes with accents.

K

124

Detailed description: This staff contains measures 124 through 127. The time signature is 3/2. The music features eighth and sixteenth notes with accents.

128

Detailed description: This staff contains measures 128 through 131. The time signature is 3/2. The music features eighth and sixteenth notes with accents.

L

132

ff

136-143

8

Detailed description: This staff contains measures 132 through 143. The time signature is 3/2. The music features eighth and sixteenth notes with accents. A fermata is placed over the final measure (143), with the number '8' written above it. The dynamic marking '*ff*' (fortissimo) is written below the staff. The measure numbers '136-143' are printed below the staff.